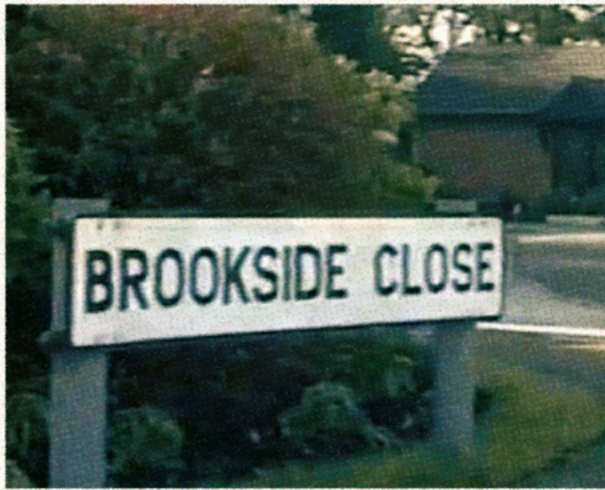


THE POOL

stv Player

FEBRUARY
ISSUE NO. 01
80p

Catch Up With
Some **CLOSE**
Friends!



Watch from Episode 1
FREE on STV Player!

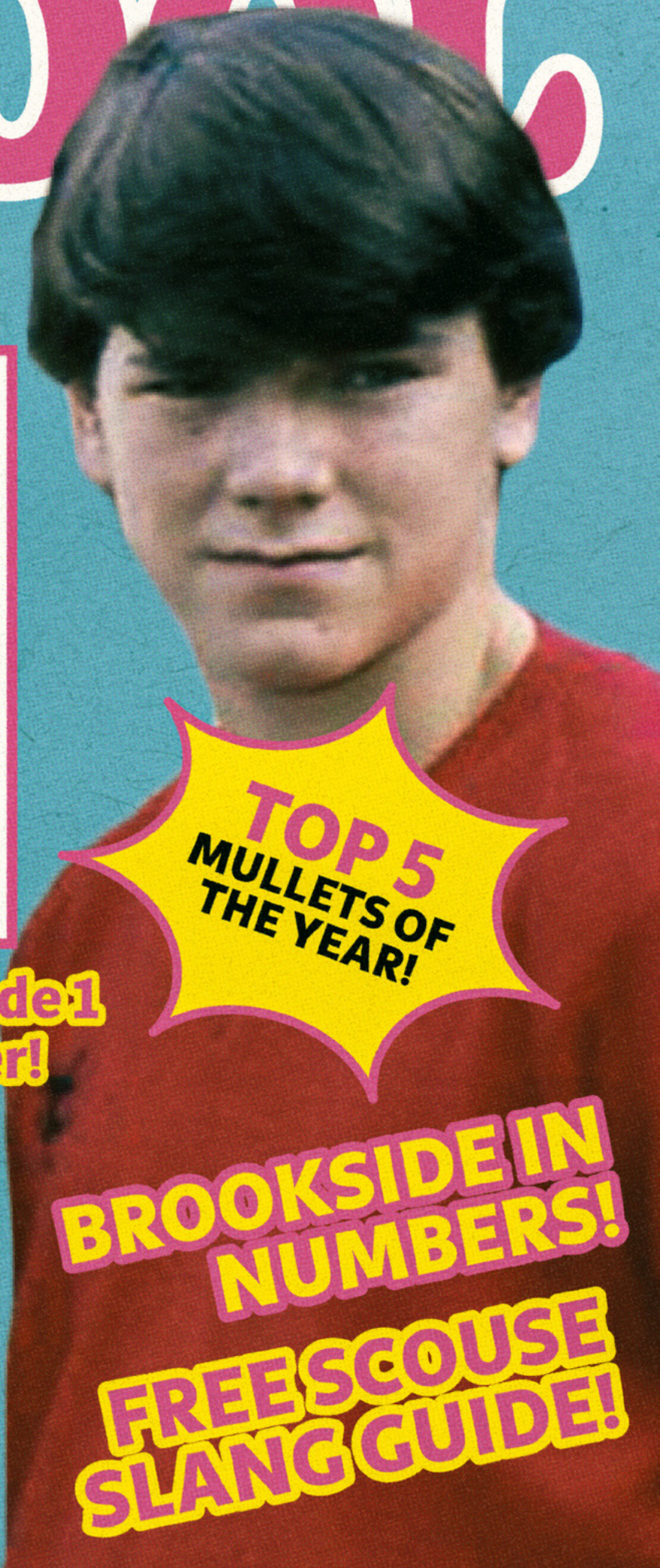
DAMON
GRANT!

STREAM FROM
FEBRUARY 1ST!

TOP 5
MULLET OF
THE YEAR!

BROOKSIDE IN
NUMBERS!

FREE SCOUSE
SLANG GUIDE!



BROOKIE'S BACK!

LEGENDARY SOAP BROOKSIDE FINDS NEW HOME ON STV PLAYER!

- 20 years after it ended, STV Player is taking viewers down memory lane by streaming original episodes of Brookside
- Marks the first time the series has been available to stream from the start – and for free, starting February 1st
- Popular soap was a TV trailblazer and launched careers of Anna Friel, Sue Johnston and Ricky Tomlinson



It's been two decades since the 13 houses on Britain's most famous cul-de-sac were boarded up, and iconic families such as the Corkhills, Dixons and Grants said their last goodbyes.

But fans of Britain's most daring and dramatic soap need wait no longer, as original episodes of Brookside will finally return to screens – on free streaming service, STV Player – next week.

Set in a Liverpool cul-de-sac, Brookside Close, the show was conceived by Grange Hill and Hollyoaks creator, Phil Redmond, and produced by his company, Mersey Television (later renamed to Lime Pictures). It aired on the launch night of Channel 4 on 2 November 1982 and drew audiences of 9 million viewers at its peak.

The fondly-remembered soap, which ended in 2003, will be available to stream from the start for the first time ever,

“I owe a lot to Brookside as I was lucky enough to have been spotted at a bus stop when I was 15 and given the role of Nisha. Had I known then that Brookside Close would be the road that led me to my surprising and eventful career, I would never have believed it!

“I am thrilled that STV Player is airing Brookie again after all these years. I never fail to hear fans tell me how much they still miss the show. Get streaming and see just how groundbreaking this Liverpool-based soap opera was all those years ago.”

**SUNETRA SARKER,
STARRED AS NISHA BATRA
IN BROOKSIDE**

after STV Player struck a major new deal with distributor, All3Media International.

It means devoted fans, as well as new viewers, can relive and enjoy Brookside's most memorable storylines – many of which were defining moments in British TV history, such as the first pre-watershed lesbian kiss between characters Beth Jordache (Anna Friel) and Margaret Clemence (Nicola Stephenson).

Across its 21-year run, the show became renowned for tackling challenging social issues, such as rape, bullying and incest. In 1985, teenage character Gordon Collins came out to his family – making him the first ever openly gay character in a British TV series.

Brookside was also known for its dramatic set pieces, including two thrilling sieges on the close – the latter of which ended in a helicopter crash –

“It may have been two decades since Brookside drew to a close, but the love for the show from its passionate army of fans has never waned. We're so pleased to be the first streaming service to bring this legendary piece of TV history back into viewers' living rooms for free, and I hope superfans and new audiences alike enjoy all the nostalgic drama that Brookside has to offer on STV Player.”

**RICHARD WILLIAMS,
MANAGING DIRECTOR OF
DIGITAL, STV**

and the murder of abusive Trevor Jordache, who was famously found buried under the patio of number 10 in 1995.

Many of Brookside's cast have gone on to have successful careers, including Anna Friel – now a Hollywood star – as well as Sue Johnston, Ricky Tomlinson, Amanda Burton, Alex Fletcher, Claire Sweeney and Sunetra Sarker.

Available for free to viewers across the UK, STV Player offers an extensive catalogue of high-quality drama from around the world. The service is available on all major platforms, including Sky Q, NOW, Virgin Media, Amazon Fire TV and Freeview Play.



Amanda Burton as Heather Haversham



Shelagh O'Hara, Ricky Tomlinson, Sue Johnston, Paul Usher, and Simon O'Brien as The Grant Family

Brookside

IN NUMBERS

A worldwide audience of

900 MILLION

viewers saw the iconic Beth Jordache/
Margaret Clemence kiss when it was
included in Danny Boyle's 2012
Olympics Opening Ceremony



Ray Quinn as Anthony Murray

4.2 MILLION

viewers watched the first episode during Channel 4's
launch night on 2 November 1982



Body of Trevor Jordache being found under the patio

X Factor star Ray Quinn was
11 YEARS-OLD
when he joined the cast as sensitive
schoolboy Anthony Murray

Brookside won

9

British Soap
Awards during its
time on air

2,915

episodes aired between
1982 and 2003

The entire set was sold at auction for
£735,000
in 2008

2

spin-off series
were created -
1987's Damon
and Debbie, and
1988's South

3

versions of the show's
memorable theme
tune were used

The soap's peak audience was

9 MILLION

viewers for the 1995 episode
when Trevor Jordache's body was
discovered under the patio



Sunetra Sarker as Nisha Batra

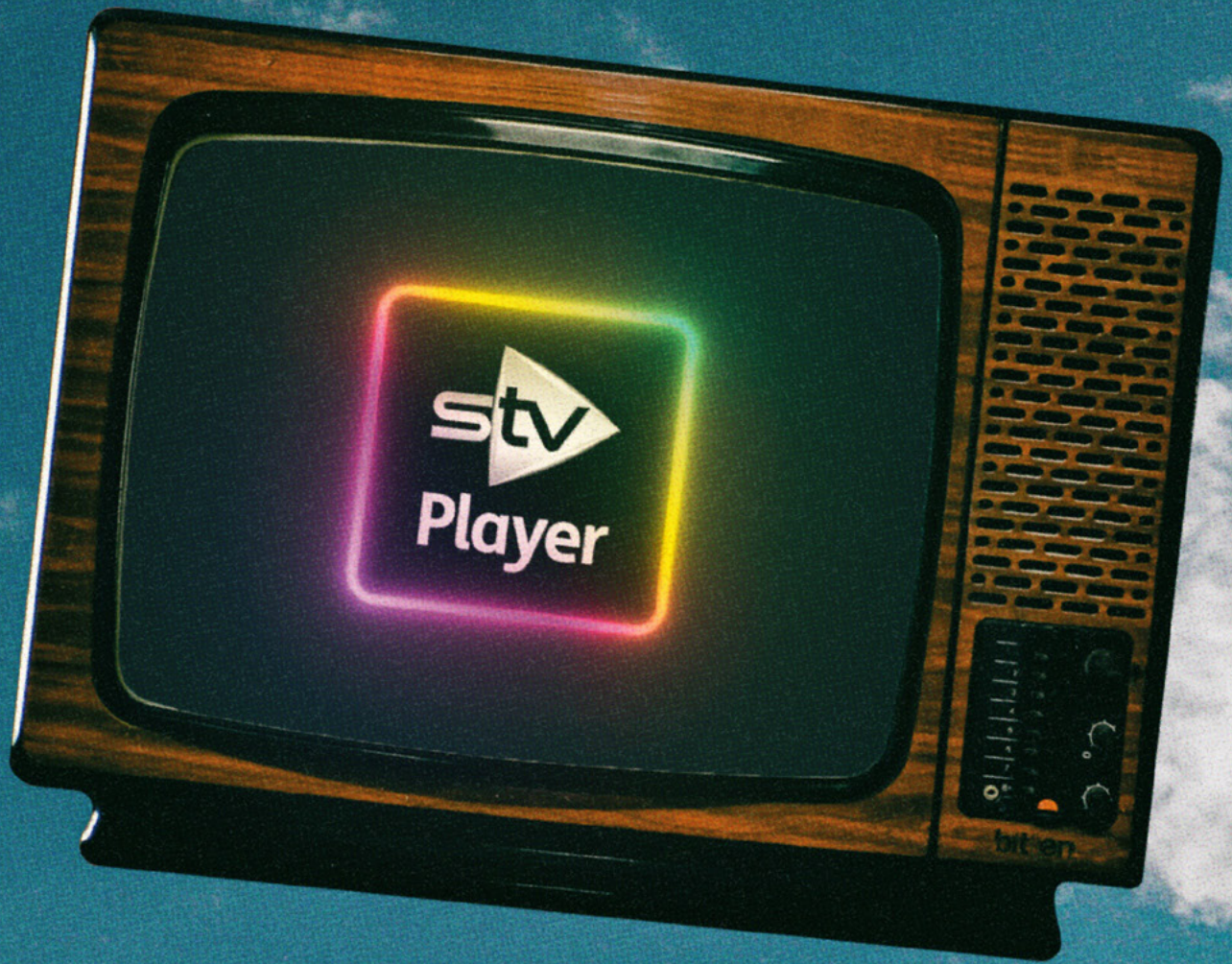


The cast of Brookside

The first



10 EPISODES

will drop on STV Player on February 1st and 5 new episodes will land
each week thereafter



Available for free to viewers across the UK

STV Player offers an extensive catalogue of high-quality drama from around the world. The service is available on all major platforms, including Sky Q, NOW, Virgin Media, Amazon Fire TV and Freeview Play.

 **Player** 

FEBRUARY
ISSUE NO. 01
80p

